

CERTIFIED FOR:

PROPOSAL APPROVAL CONSTRUCTION

BY: LR DATE: 8/17/98

SOLD TO: _____, TEXAS ORDER NO.: 06686953-4-0605

USER: BUTINGE NAFTA JSC - LITHUANIA ITEM NO.: DIESEL DRIVEN FIREWATER PUMP P-903

INVOICE No.	SERIAL No.	PUMP TYPE AND SIZE	No. STAGES	CAPACITY gpm [m ³ /h]	BOWL HEAD-ft [m]	V.P.M.P.SP.D. rpm	PUMP ROT. (FROM TOP VIEW)	DIESEL ENGINE		PH. Hz
								H.P. [kW]	FRAME	
214089VFOX	214089	20HXBF	3	5504 [1250]	356 [108.5]	1760	CCW	708 [528]	DDFP-08FH	VAC ENCL.

CAUTION

ALL PLUMBING MUST BE SUPPORTED AND/OR ISOLATED SO THAT NO WEIGHT OR STRESS IS APPLIED TO ANY ENGINE COMPONENT

ATTENTION

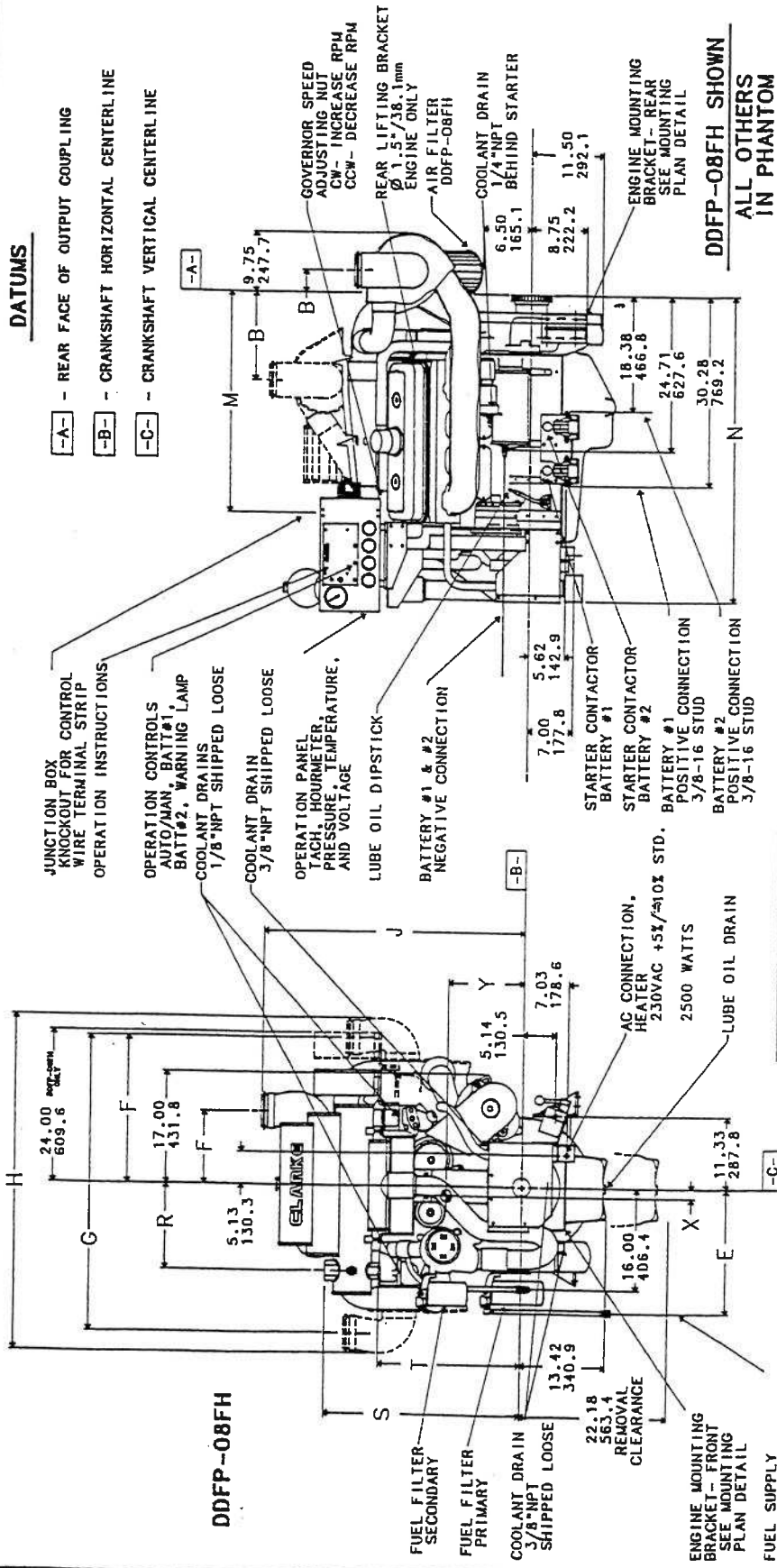
REFER TO THE SPECIFIC MODEL - INSTALLATION AND OPERATION DATA FOR INSTALLATION GUIDELINES

REDUCED DRAWING

DO NOT SCALE UNKNOWN DIMENSIONS

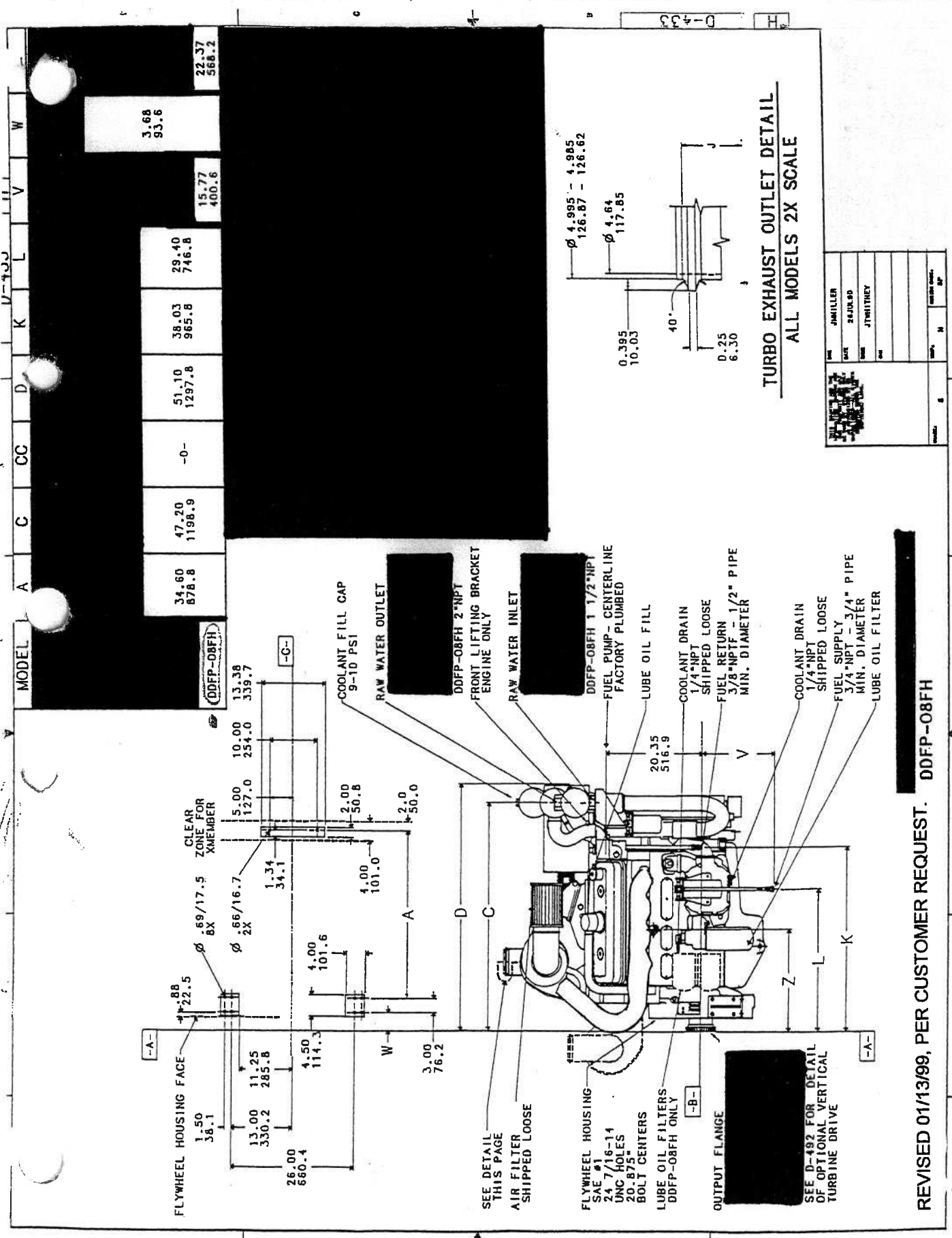
DDFP-08FH

MODEL	B	E	F	G	H	J	M	N	R	S	T	X
	3.55	19.13	23.25	48.50	52.75	28.25	35.18	48.64	13.50	31.38	22.63	9.56
	90.2	485.9	590.6	1181.1	1339.9	717.6	893.6	1235.5	342.9	797.1	574.9	8.64
												242.8



REV	DATE	DESCRIPTION
D	01NOV93	3/4" NPT FUEL RETURN CONNECTION WAS 3/4" NPT - 3/4"
E	01NOV93	3/4" NPT FUEL SUPPLY CONNECTION WAS 3/4" NPT - 1/2"
F	01NOV93	RAW WATER INLET WAS 2" NPT, ADDED MODEL -08FH
G	01NOV93	RELOCATED FUEL FILTERS, CORRECTED DIMS 'E', 'L', 'S' & 'V'
H	01NOV93	MODEL -08FA - RAW WATER INLET WAS 2" NPT
I	01NOV93	REVISED 2" NPT WATER AND ADDED NEW TIGHTENING PANEL
J	01NOV93	H REVISED TO MEET FORWARD WITH NO OTHER CHANGES

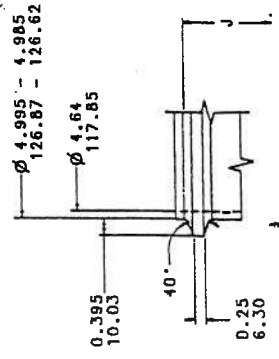
REVISED 01/13/99, PER CUSTOMER REQUEST.



MODEL	A	C	CC	D	K	L	V	W
	34.60 878.8	47.20 1198.9	-0-	51.10 1297.8	38.03 965.8	29.40 746.8	15.77 400.6	3.68 93.6
								22.37 568.2

(DDFP-08FH)

TURBO EXHAUST OUTLET DETAIL
ALL MODELS 2X SCALE



DESIGNED BY	J. MILLER
CHECKED BY	24 JUL 80
DATE	J. WITNEY
BY	
NO.	
REV.	
DATE	
BY	

REVISED 01/13/99, PER CUSTOMER REQUEST. DDFP-08FH